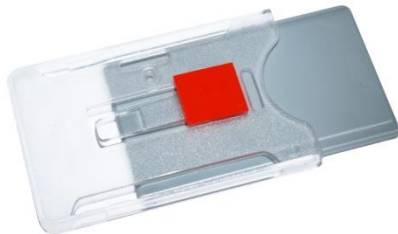


## WinFix™

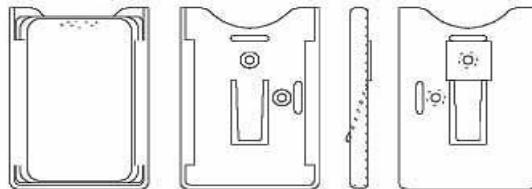
### RFID Solution Accessories



#### USER ADVANTAGES:

- Allows for easy insertion and removal of tag
- Designed to withstand all climates
- Affixes to vehicle to ensure tag stays in place

The WinFix™ is a tag holder used for mounting ID-tags to the inside of windshields using a double-sided tape with a plastic spring that holds the ID-tag in position after insertion. Designed as a “vertical pocket”, there is no risk of the ID-tag falling out of the holder. Both the tape and the holder are transparent, making it possible to see the tag from outside of the vehicle. WinFix™ is designed for easy insertion and removal of a tag in applications where a tag is being utilized for multiple purposes. This design also makes it possible to put more than one card in the holder in order to display different information – plastic cards or labels in front of the UHF ID-tag do not affect reader capabilities. The adhesive used is an advanced type that withstands car vibrations as well as cold climates and high temperatures in sunny regions.



*Easy to slide cards in and out  
Climate and vibration resistant*

*Cards can be seen through the window  
Space to display a separate card*

### SPECIFICATIONS

Mechanical Information	WinFix™
<b>Part No. S1951</b>	
Weight	0.25 oz
Dimensions	3.54 in x 2.36 in x 0.28 in
Color	Transparent
Holder Material	Polycarbonate
Tape Material	VHB 4910F, 0.75 in x 0.75 in
Compatible Tags	UHF: NA1000 ISO, NA1025 ISO Duo and NA1030 ISO Mifare Microwave: S1255 MarkTag Classic

*\*The information in this document may be subject to change without prior notice.\**